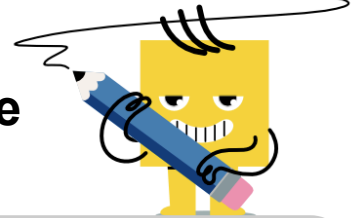




## Decimal Concept Comparison - Picture Hundredths vs Fraction Hundredths



1 Choose the correct equality operator



$$\frac{66}{100}$$

A

&lt;

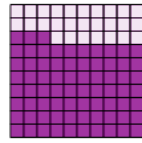
B

=

C

&gt;

2 Choose the correct equality operator



$$\frac{66}{100}$$

A

&lt;

B

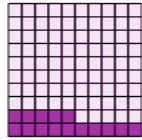
=

C

&gt;

3 Choose the correct equality operator

$$\frac{20}{100}$$



A

&lt;

B

=

C

&gt;

4 Choose the correct equality operator

$$\frac{58}{100}$$



A

&lt;

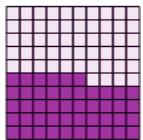
B

=

C

&gt;

5 Choose the correct equality operator



$$\frac{40}{100}$$

A

&lt;

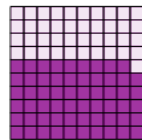
B

=

C

&gt;

6 Choose the correct equality operator



$$\frac{59}{100}$$

A

&lt;

B

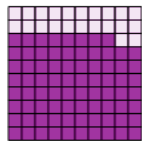
=

C

&gt;

7 Choose the correct equality operator

$$\frac{78}{100}$$



A

&lt;

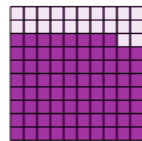
B

=

C

&gt;

8 Choose the correct equality operator



$$\frac{78}{100}$$

A

&lt;

B

=

C

&gt;