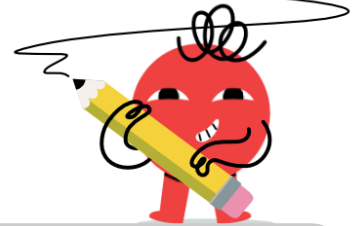




Fraction Division - Whole by Improper



<p>1 Divide these fractions and simplify the answer</p> $4 \div \frac{15}{5}$	<p>A $\frac{3}{5}$</p>	<p>B 9</p>	<p>C $1\frac{1}{3}$</p>	<p>2 Divide these fractions and simplify the answer</p> $4 \div \frac{7}{3}$	<p>A $1\frac{5}{7}$</p>	<p>B $9\frac{1}{3}$</p>	<p>C 7</p>
	<p>D 12</p>	<p>E $\frac{9}{16}$</p>			<p>D 1</p>	<p>E $\frac{7}{8}$</p>	
<p>3 Divide these fractions and simplify the answer</p> $4 \div \frac{16}{5}$	<p>A $\frac{9}{17}$</p>	<p>B $\frac{9}{16}$</p>	<p>C $1\frac{1}{4}$</p>	<p>4 Divide these fractions and simplify the answer</p> $4 \div \frac{5}{2}$	<p>A $1\frac{1}{5}$</p>	<p>B 6</p>	<p>C 10</p>
	<p>D 9</p>	<p>E $12\frac{4}{5}$</p>			<p>D 1</p>	<p>E $1\frac{3}{5}$</p>	
<p>5 Divide these fractions and simplify the answer</p> $4 \div \frac{15}{9}$	<p>A $\frac{13}{16}$</p>	<p>B $2\frac{2}{5}$</p>	<p>C $6\frac{2}{3}$</p>	<p>6 Divide these fractions and simplify the answer</p> $4 \div \frac{16}{9}$	<p>A 13</p>	<p>B $\frac{13}{17}$</p>	<p>C $2\frac{1}{4}$</p>
	<p>D $\frac{13}{15}$</p>	<p>E 13</p>			<p>D $\frac{13}{16}$</p>	<p>E $7\frac{1}{9}$</p>	
<p>7 Divide these fractions and simplify the answer</p> $3 \div \frac{5}{2}$	<p>A $1\frac{1}{5}$</p>	<p>B 5</p>	<p>C $7\frac{1}{2}$</p>	<p>8 Divide these fractions and simplify the answer</p> $4 \div \frac{6}{2}$	<p>A 6</p>	<p>B $1\frac{1}{3}$</p>	<p>C 1</p>
	<p>D 1</p>	<p>E $\frac{5}{6}$</p>			<p>D 12</p>	<p>E $\frac{6}{7}$</p>	